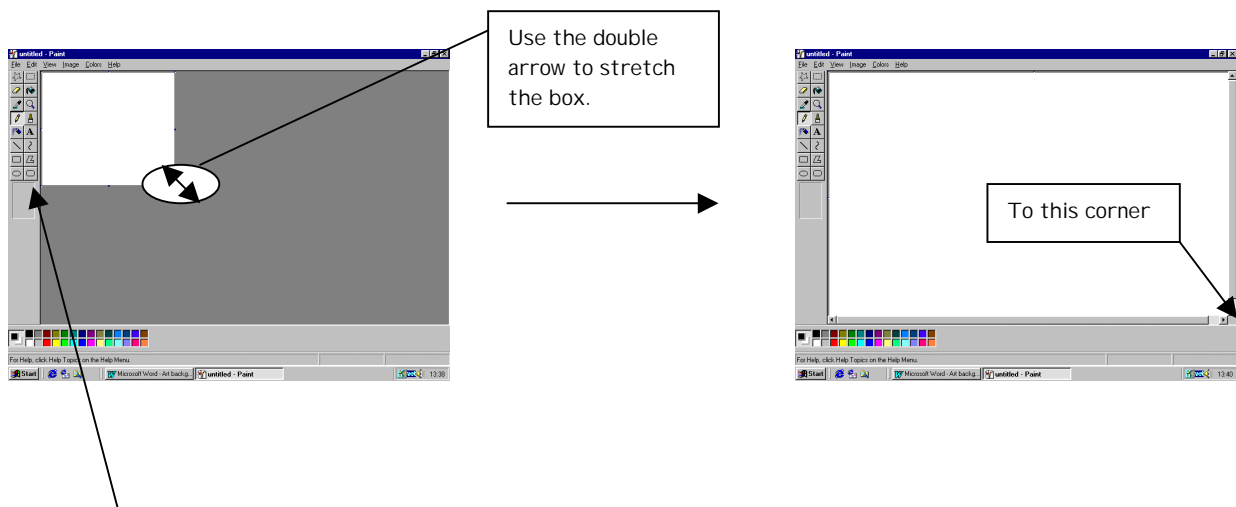


Creating Backgrounds in Paint

- 1) Open the **Paint** program and create a **new** document from the file menu.
- 2) Stretch out the paint area to maximum.

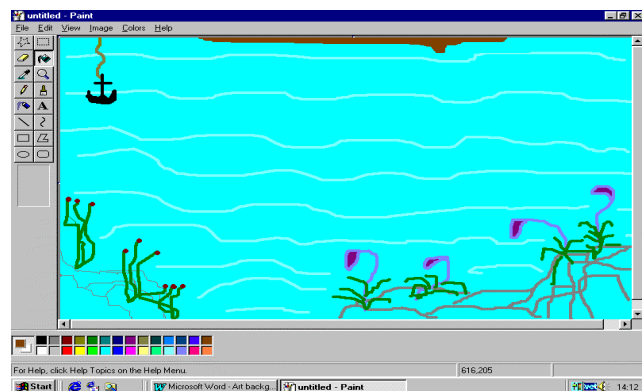


- 3) Use the **tools** on the left to make an environment for your model.

Think about what you would add and why.

What elements would be good to use for a background?

Try and keep it simple as you will add more objects later on.



Save your work (E.g. background or environment)

Remember to save your work at intervals.